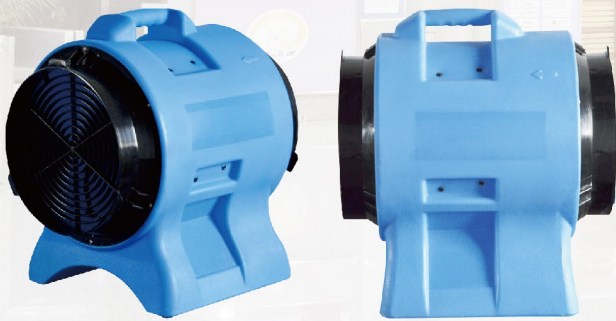


Air Movers

Confined Space Air Mover

Model: WMAMCS



Technical Specifications

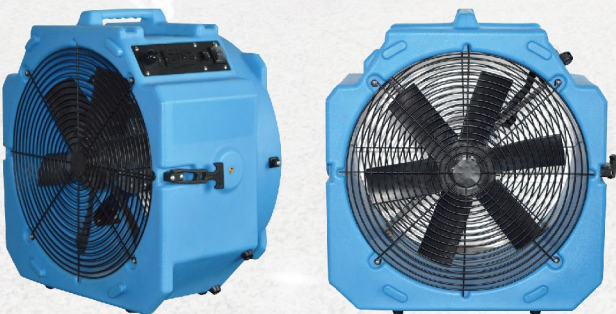
Motor Power:	1 HP
Power Supply:	110V~220V/50~60Hz
Max RPM:	3325
Air Volume:	2200CFM
Speed:	Single
Net Weight:	12KG
Gross Weight:	13KG
Package Size:	52x40x50cm
MOQ:	50pcs
Certificate:	ETL/SAA/CE

Product features

- Lightweight polyethylene housing designed to withstand the harshest conditions.
- Stackable to save storage and transportation space.
- Suitable with ducting for a variety applications.
- Powerful airflow 2200CFM with only 7 amps.

High Velocity Axial Air Mover

Model: WMAMAX



Technical Specifications

Motor Power:	1/4 HP
Power Supply:	110V~220V/50~60Hz
Max RPM:	1450
Air Volume:	4000CFM
Speed:	Two
Net Weight:	18KG
Gross Weight:	19KG
Package Size:	53x33x55cm
MOQ:	50pcs
Certificate:	ETL/SAA/CE

Product features

- Built-in power dual outlets for daisy chaining.
- 25 ft. power cord with wrap-around cord design.
- GFCI protection for more safety in wet conditions.
- Less than 3.6 amp draw with 4000 CFM powerful airflow capacity.
- Lightweight and stackable for easy storage and transportation delivery.

Low Profile Air Mover

Model: WMAMLO



Technical Specifications

Motor Power:	1/4 HP
Power Supply:	110V~220V/50~60Hz
Max RPM:	1600
Air Volume:	850CFM
Speed:	Two
Net Weight:	9KG
Gross Weight:	10KG
Package Size:	60x49.5x24cm
MOQ:	50pcs
Certificate:	ETL/SAA/CE

Product features

- Built-in power dual outlets for daisy chaining.
- 25 ft. power cord with wrap-around cord design.
- GFCI protection for more safety in wet conditions.
- Best in class compact, stackable and most rugged.
- Easy to clean the top parts and electronics lift out.

Air Scrubbers

Air Scrubber

Model: WMA550



Technical Specifications

Motor Power:	1/3 HP
Power Supply:	110V~220V/50~60Hz
Amps:	2.5
Air Volume:	550CFM
Speed:	Variable
Net Weight:	16KG
Gross Weight:	17.5KG
Package Size:	65x42x63cm
MOQ:	50pcs
Certificate:	ETL/CE

Product features

- High effective Hepa filter with advanced two stages filtration technology.
- Variable speed control and built-in daisy chainable power outlet design.
- Durable, lightweight and stackable for storage and transportation.
- GFCI protection and circuit breaker.
- 25 ft. power cord with wrap-around cord design.



CONTACT WITH US

WINMORE GROUP (CHINA) CO.,LTD | XIAMEN WINMORE TRADE CO.,LTD

Add: 2203-2, Taidi Haixi Center Building B, Haicang District, Xiamen City, China

W: www.winmorehvac.com E: mathew@winmorehvac.com Tel: 0086-592-6050171